



**BRUSKE**  
**Power**  
**Sweeper**  
**Brushes**

*Catalog 201*

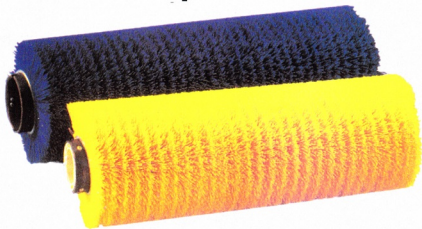
*Typical Brushes*



*Bruske Brushes*



# Power Sweeper Brushes



BRUSKE POWER SWEEPING BRUSHES. . . are made from the finest materials available. The utilized Bruske replacement parts are specially fabricated to meet the most exacting demands and requirements placed upon these products in all environments. Most of the replacement series for power sweepers are available in durable Brulon synthetic bristles. Others in the replacement brush series are available in wire, fiber or nylon bristles.



**BRULON H.D. STIFF:** High density stiff Brulon synthetic bristles for use under normal conditions as an all-purpose, long-life sweeping brush.



**BRULON H.D. MEDIUM:** High density medium Brulon synthetic bristles that are perfect for use in sweeping fine debris on smooth or uneven floors..



**BRULON S.H.D.** A super high density Brulon synthetic bristle containing 20% more bristles with extra wraps and a waterproof core. Designed for longest brush life. Recommended for use in areas where adverse conditions exist. . . grease, oil or dirt.



**BRULON H.D. SOFT:** High density soft Brulon synthetic bristles. Recommended for sweeping fine dust on smooth surfaces, as well as uneven floors.



**BRULON PATROL STIFF:** Stiff Brulon synthetic bristles for use with refuse on rough surfaces. Recommended for use in parking lots and for use in sweeping up grass and leaves.



**BRULON PATROL MEDIUM:** Medium Brulon synthetic bristles. Recommended for picking up bulky debris on uneven surfaces.



**BRULON PATROL SOFT:** Soft Brulon synthetic bristles for sweeping light, powdery substances (salt, flour, powdered sugar, etc.) on extra smooth surfaces.



**CRINKLE WIRE:** Tempered steel wire bristles for sweeping grime and compacted dirt.



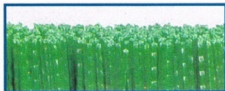
**FIBER H.D.:** High density Union Fiber Mix bristles. Recommended for sweeping extra fine dust on smooth surfaces



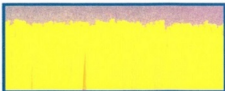
**SNOW BRUSH:** Stiff Brulon synthetic bristles especially designed for use in sweeping snow with attachment accessory



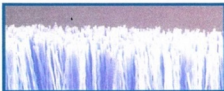
# Power Sweeper Scrubbing Brushes



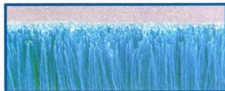
**BRULON STIFF:** High density stiff Brulon synthetic bristles for use under normal conditions as an all-purpose, long-life sweeping brush.



**BRULON MEDIUM:** High density medium Brulon synthetic bristles that are perfect for all-purpose scrubbing action.



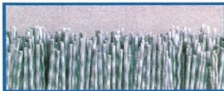
**BRULON SOFT:** High density soft Brulon synthetic bristles for use on high gloss sealed surfaces.



**BRULON SUPER SOFT:** High density super soft Brulon synthetic bristles for use on high gloss sealed surfaces.



**PATROL SCRUB:** Stiff Brulon synthetic bristles for use with extra heavy refuse on rough surfaces. Recommended for use in parking lots and for use in sweeping up grass and leaves.



**BRASIVE:** A blend of Brulon mixed lightly with Dupont Tynex A abrasive materials designed for use in areas where aggressive scrubbing action is required.



**BRASIVE PLUS:** Equal parts of both Brulon and Dupont Tynex A abrasive material bristles that provide for more aggressive scrubbing action.



**SUPER BRASIVE:** 100% Dupont Tynex A abrasive material bristles for exceptionally aggressive scrubbing action in areas where heavy grease, oil, and ground in soil have built up on floors or other smooth surfaces.



**WIRE:** Tufted high carbon steel wire specially suited for heavy scrubbing and stripping applications on cement floors. Can be used wet or dry. (stainless steel wire also available.)

# Power Sweeper Side Brushes

BRUSKE POWER SWEEPER SIDE BRUSHES. . . are quality-crafted from specially selected, long-life materials that outperform and outlast the original equipment brushes. Each facet of these carefully fabricated brushes adheres to rigid specifications for use with almost all popular floor care machines. The selection of bristles available . . . Brulon, nylon and wire. . . have been made to provide you with a Bruske replacement brush that will handle your replacement and cleaning needs.



**BRULON** : High density synthetic bristles designed for "no-abrasive," superior scrubbing performance and long life.



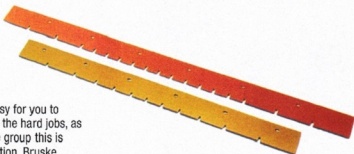
**NYLON**: Excellent resistance to most chemicals and water makes this synthetic highly desirable for a multitude of applications.



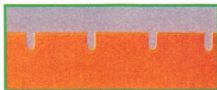
**WIRE**: Tufted high carbon steel wire specially suited for extra heavy duty applications.

# Squeegee Refill Blades and Splashguards

BRUSKE SQUEEGEE REFILL BLADES AND SPLASHGUARDS. . . make it easy for you to replace original equipment with top quality blades that are made to tackle the hard jobs, as well as stand up for long life. You'll find a replacement blade in the Bruske group this is manufactured to exacting specifications to fit almost any machine, in addition, Bruske Squeegee Refill Blades and Splashguards are made with the right materials to do the best possible cleaning job.



**TAN GUM**



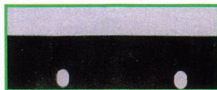
**RED SYNTHETIC**



**BLACK, C.I.**



**URETHANE**



**VINYL**



**NEOPRENE**

# Power Sweeper Scrubbing Brushes and Disc Brushes

BRUSKE POWER SWEEPER SCRUBBING BRUSHES AND DISC BRUSHES... are "dynamically balanced" brushes made to replace the original equipment in your present machine. These individual replacement brushes are the finest available; thick with indestructible bristles, trimmed just right and finished to allow the brush to do its work evenly under the weight of the machine. This gives the largest possible flat brushing surface in contact with the floor and results in a smoother, more efficient cleaning action. These brushes are available in a choice of high performance Brulon and nylon synthetic bristles.



**BRULON:** High density synthetic bristles designed for "non-abrasive," superior scrubbing performance and long life.



**NYLON:** Excellent resistance to most chemicals and water makes this synthetic highly desirable for a multitude of applications including general to heavy scrubbing on cement, quarry tile, terrazzo, or marble floors.



**BRASSIVE:** A 100% abrasive bristle designed for use in areas where aggressive scrubbing action is required.



**.014 GAUGE WIRE:** Tufted high carbon steel wire specially suited for heavy scrubbing and stripping applications on cement floors. Can be used wet or dry.



**STAINLESS STEEL:** Tufted stainless steel wire specially suited for heavy scrubbing and stripping applications. Can be used wet or dry.

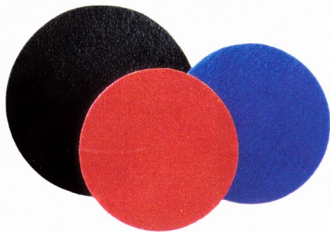


**BASSINE FIBER:** A stiff, long-wearing natural fiber, dark brown in color, specially dressed and suited for use with cleaning solutions for heavy scrubbing and light stripping on resilient floor coverings, cement, quarry tile, terrazzo, or marble.



**UNION MIX FIBER:** A mixture of white Tampico and Palmyra fibers that are blended to special specifications. The perfect bristle for general polishing on resilient floor coverings, cement, quarry tile, terrazzo, or marble.

# Thick Line Floor Pads



**BUSKE THICK LINE FLOOR PADS.** . . . are perfect pads for every cleaning job. They're rugged, durable and totally dependable for use in modern scrubbing and floor care machines. These quality-made thick floor pads come in a range of sizes from 7 $\frac{3}{4}$ " up through 27" in diameter. They are totally dependable, low-cost pads that work most aggressively under all conditions and are made to exacting specifications to insure proper and secure seating with ease and quickness. Buske offers you a wide choice of thick floor pads that are just right for every cleaning job!



**BLACK STRIP:** A nylon blend made for heavy duty stripping work. Very aggressive agents are embedded throughout the pad to help clean down to the original surface. Recommended for removing old wax build-up.



**GREEN SCRUB:** A nylon blend made for heavy duty scrubbing or light stripping, wet spray. The aggressive agent embedded throughout the pad works to remove heavy dirt and scuff marks without removing waxed finish.



**TAN BUFF:** A nylon blend for buffing and light wet scrubbing. The mild aggressive agent embedded throughout the pad makes it possible to remove light scuff marks and dirt while producing a smooth, shining surface



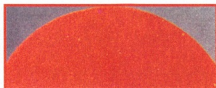
**BEIGE ULTRA HIGH SPEED:** A polyester blend especially suited for spray buffing with a high speed buffing machine (1,000 - 2,000 RPM). Produces an extra high gloss.



**BROWN STRIP:** A polyester blend for heavy duty wet or dry stripping. Very aggressive agent embedded throughout pad for getting down to original surface when removing old wax build up.



**BLUE CLEANER:** A polyester blend specially adapted for heavy duty or light stripping, wet or spray. Very aggressive agent embedded throughout pad to help remove heavy dirt and scuff marks without removing waxed finish.



**RED SPRAY:** A polyester blend with mild agents embedded throughout the pad. For spray buffing and light scrubbing. Removes dirt and light scuff marks while producing a smooth, shining surface.



**YELLOW HIGH SPEED SPRAY/BUFF:** A polyester blend to produce high gloss finishes when spray buffing with high speed machines (350 - 1,000 RPM).



**WHITE SUPER POLISH:** A polyester blend with no aggressive agents added into pad. An extra fine pad for polishing to produce high luster finishes.



**GALAXY:** A specially designed pad of polyester blend for use in high speed floor machines. Openings strategically placed around the pad to reduce drag and eliminate blown circuits. Used to produce extra high gloss finishes.

**HOG BRISTLE:** A blended virgin polyester and high grade hog hair. For total hardwood floor care. (Not Pictured)